

La Vella Mobile Radio

Mobile Application User Guide

Java Mobile Edition

ver1.1 - October 2007

*Note: the mobile radio application will use an internet connection to stream radio stations. Please be sure that you have a decent data option on your plan (we recommend an unlimited data option or wifi connection).

Contents:

- Quick Install
- Quick User Guide
- Quick Troubleshooting

- Installing
- Launch the Application

- Navigation
- Main Menu
- fullACCESS Log In
- Free Stations
- Radio Stations
 - Categories
 - Station List

- My Favorites
- Audio Player
- Help
 - Settings
 - Troubleshooting
 - MIME Types
 - About

- FAQ/Troubleshooting

Quick Install

From your mobile phone:

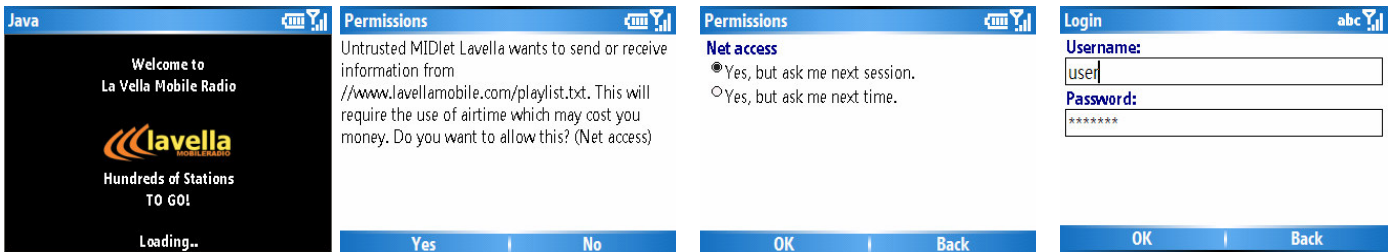
1. Open your phone's browser.
2. Find the area where you can 'Go To URL', or type in a location.
3. Type in: www.lavmob.com
4. Click on 'Download'
5. The download and install will start automatically. Your phone may prompt you through the install (stating that it is a Third Party software, etc...) Please select yes and continue with the install.
6. That is it! The phone will now have the La Vella Mobile Radio application installed.

Note: If your phone does not support regular HTML browsing (you are getting an error trying to get to our page, try: <http://wap.lavmob.com> ; that will give you the basic WAP page)

Quick User Guide

Here is a quick guide on how to use the La Vella Radio Mobile application. You can consult this full user guide for added info.

1. Launch the La Vella Mobile Radio Application.
2. Your phone may ask if you wish to 'Use the internet connection' for this application, please select yes.
3. Your phone may ask if you would like to give Net Access this time only or this session. We recommend setting it at 'This Session', or 'Ask Me Next Session'. This will tell your phone that this application will want to use the internet at several times (every time you want to listen to a station) and there is no need to prompt and ask you each time.
4. You are in! Log in using your username and password (note, your password is case sensitive!). This will give you full ACCESS to all of the preset stations and the My Favorites list. (if you are only testing things out, don't worry, just enjoy the Free Stations at this time)
5. Select 'Radio Stations', find a 'Category', find a 'Station'. Click on it! A player screen will come up and will automatically connect to the stream. You will be hearing digital radio on your phone in seconds!



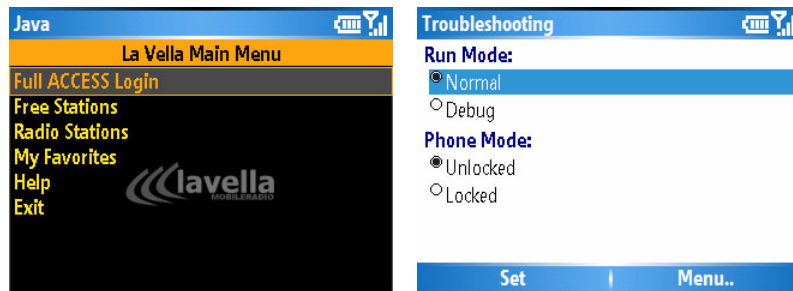
Quick Trouble Shooting

If your phone does not stream the selected station:

The application may come back with an error. Pay attention to what the error is. If the error is 'MIME type not supported' – that means that your specific phone cannot stream MP3 files. (Even though your phone may be able to play MP3 files, some handsets disable the ability to stream them, such as some Windows Mobile handsets).

However, if the error is a 'Shoutcast Grabber Error' or 'Cannot Stream' error, that could mean that your carrier has blocked direct streaming from your handset. No problem, we have built a re-broadcast server that can help.

Here is the easy fix: on the application, go to 'Help', 'Troubleshooting', select 'Locked Mode', select 'Set'. That will set your player to reroute the streams for you.



Installing

There are two easy ways to install the application to your phone: From your PC (using your phone's pc software and a cable), and from your Mobile Browser (downloading directly to your phone from your mobile internet).

You will find easy instructions on how to install from your mobile on our first page (Quick Install).

From your PC: Please download the ZIP file to your computer if you haven't already. Extract the contents to your PC (unzip). Here you will find a few files including this user guide, and a Jar and Jad file (the mobile application). If you have a cable for your phone you should also have software that allows you to connect your PC to your phone. Please connect now. Once your phone is connected to the PC, launch your phone software and select 'add a program'. You may browse to the folder where the Jad/Jar file is and select. The software will install the application to your phone and you are all set to go.

* you should consult your phone's manual and software guide to learn added details on how to load software onto your phone. The above is a generalized guide.

Launch the Application

Once you have installed the application you would have been told where the phone has saved the program. Most likely, the application can be found in the Java folder or the Games and Applications folder (have a look around the handset to be sure).

So go ahead and launch the application.

You will notice the La Vella Mobile Radio splash screen come up, and also your phone may notify you that the program wishes to use the internet. Please go through the prompts giving permission to use the internet connection (so that you will be able to stream stations once inside).

Navigation

The program is quite easy to navigate. Using your directional pad you can easily go up and down to scroll through the options.



Main Menu

The main menu consists of six options: Login, Free Station, Radio Stations, My Favorites, Help and Exit.

fullACCESS Log In

This area allows you to enter your Username and Password in order to use the service to its full potential. Being logged in allows you to access the full range of radio stations as well as use the favorites feature. If you do not log in, you are more than welcome to use the program's free stations area.

A screenshot of a mobile application login screen. At the top, there is a blue header bar with the word "Login" on the left and a signal strength icon on the right. Below this are two input fields. The first is labeled "Username:" and contains the text "user". The second is labeled "Password:" and contains a series of asterisks "*****". At the bottom of the screen, there is a blue bar with two buttons: "OK" and "Back".

Free Stations

This area gives a couple of fully functional streams for you to test the application out. We have added it so that we can give an unrestricted test to the user. It is a perfect way to 'try before you buy'.



Radio Stations

This area consists of radio format categories. These categories will help you find stations that you enjoy. By selecting a category, you will be taken to the list of stations. Feel free to click on any that you wish to hear and the player screen will automatically come up and launch the stream.

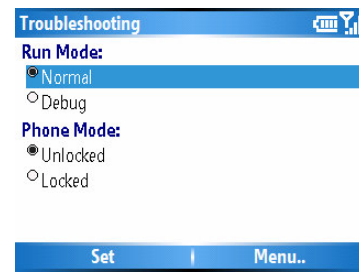
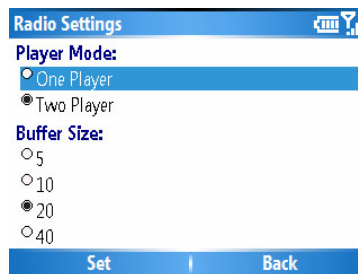


My Favorites

This area stores the favorite stations that you have set from the player screen. It provides quick and easy access to the stations that you would like to hear frequently.

Help

The Help area gives you some options and settings to help your handset accommodate the streaming process.



Settings

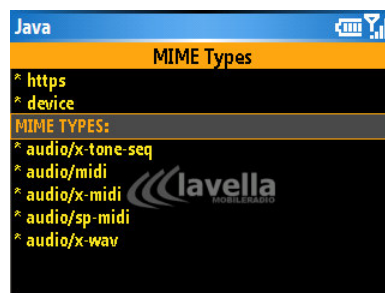
This section will give you two different settings to adjust. Player Mode gives you the option of running two players simultaneously. Sometimes this helps in the buffering process. Please note that running two players at once will take up more usage memory, so be aware if 'Running out of memory' errors come up. Buffer Size gives you the option to adjust the size of buffer that the application downloads. This may give you a better listening experience if you find that the application is always buffering out.

Troubleshooting

This area has two options that can provide easy solutions to streaming errors. The debug mode can be set so that our programmers can find errors and issues that you may have. If you have issues and have talked to our support team, they may ask for the error log, set Debug mode, and send an error log to us by hitting 'Menu', 'Send Log'. The Phone Mode option will allow the application to reroute the broadcast in the event that your carrier blocks out streaming. By default the application is set to Unlocked Mode. This is most likely going to work fine. In the event that you receive a 'Shoutcast grabber error', or 'Unable to stream error', you can try to set the application to Locked Mode. This will find our alternate broadcast streams and you should now be able to stream stations.

MIME Types

This section will list the available media types that your phone can handle. Most importantly, you will want to see 'Http' in the protocols and 'audio/mp3' in the mime types. That means that your phone model can handle MP3 streaming.



About

This screen gives some quick info on the program version and author.

Audio Player

The audio player is built into this application. When you select a radio station to stream, the audio player screen will come up. There are several options including, Play/Stop, Volume Up/Down, Add/Remove Favorite. These functions are self explanatory and very easy to use. You can also see the stream name, status and kbps of the current station on this screen.



FAQ/Troubleshooting

Please see our online FAQ section for frequently asked questions on using the application as well as support tips. If you are still having difficulties with Installing, Running the application or Streaming stations please send us an email so that we can assist you. Mobile applications are tricky sometimes, not all phones are the same and not all carriers offer similar access. We are more than happy to walk through the issue and find the solution!

We appreciate your interest in digital radio on your mobile handset and we know you will love the value of our service. Feel free to contact us with feedback, suggestions, and more.

www.lavellamobile.com