

La Vella Mobile Radio

Mobile Application User Guide

Windows Mobile Edition

ver1.1 - October 2007

*Note: the mobile radio application will use an internet connection to stream radio stations. Please be sure that you have a decent data option on your plan (we recommend an unlimited data option or wifi connection).

Contents:

Quick Install

Quick User Guide

- Launching the application
- Play Free Stations

Navigating

- Logging In
- Playing Full ACCESS Stations

Other Features

- Recording the audio stream

FAQ/Troubleshooting

Quick Install

From your mobile phone:

1. Open your phone's browser.
2. Find the area where you can 'Go To URL', or type in a location.
3. Type in: www.lavmob.com/wm
4. Choose the proper version (Smartphone or PocketPC); Click on 'Download'
5. The download and install will start automatically. Your phone may prompt you through the install (stating that it is a Third Party software, etc...) Please select yes and continue with the install.
6. That is it! The phone will now have the La Vella Mobile Radio application installed.

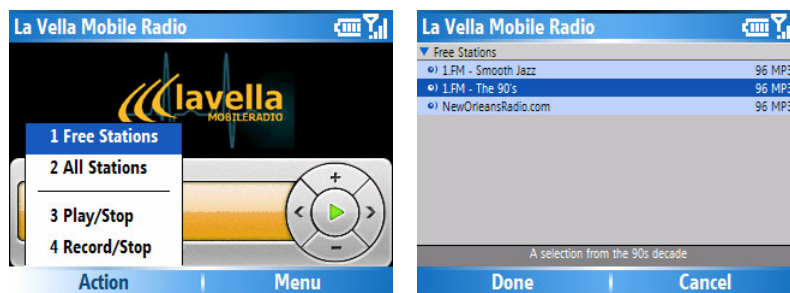
*note: you can also download the ZIP file, and install the application from your PC. Please see your phone's manual on how to install software using your phone cable or Bluetooth.

Quick User Guide

Here is a quick guide on how to use the La Vella Radio Mobile application. You can consult this full user guide for added info.

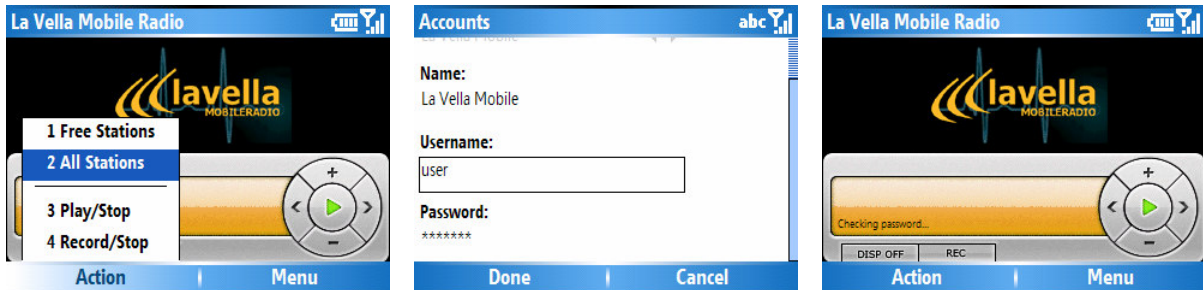
1. Launch the La Vella Mobile Radio Application.
2. Your phone may ask if you wish to 'Use the internet connection' for this application, please select yes.
3. Your phone may ask if you would like to use the internet 'every time', 'this session', for 'every request', 'always', 'never' etc... We recommend setting it at 'Always', or 'Every Time'. This will tell your phone that this application will want to use the internet at several times (every time you want to listen to a station) and there is no need to prompt and ask you each time.
4. You are in!
5. You can navigate the menus with the directional pad, and select using the centre/main button.

If you do not have a fullACCESS pass yet, you can select the Free Stations area by hitting the Action menu button, and choose any one to listen to.



Navigating

If you do have a fullACCESS pass, when you select All Stations you are prompted to enter your username and password. The application automatically logs you in. Once you log in for the first time, the application remembers your username and password and will log in for you automatically.



Now that you are logged in, feel free to look through the category list and choose a station to listen to. The player automatically loads and plays the digital stream!



Other Features

You will notice other great features such as the Record/Stop buttons and the Settings area. These bonus options allow recording of the audio stream to your phone (please follow Copyright Laws in your area). You can adjust the settings in the Settings area.



FAQ/Troubleshooting

Please see our online FAQ section for frequently asked questions on using the application as well as support tips. If you are still having difficulties with Installing, Running the application or Streaming stations please send us an email so that we can assist you. Mobile applications are tricky sometimes, not all phones are built the same and not all carriers offer similar access. We are more than happy to walk through the issue and find the solution!

We appreciate your interest in digital radio on your mobile handset and we know you will love the value of our service. Feel free to contact us with feedback, suggestions, and more.

www.lavellamobile.com